

DUAL-BAND CONNECT IoT GATEWAY



ORDER CODE: GTW-BL100
PRODUCT CATEGORY: GATEWAYS

Dual-Band Power. Connectivity Without Limits.

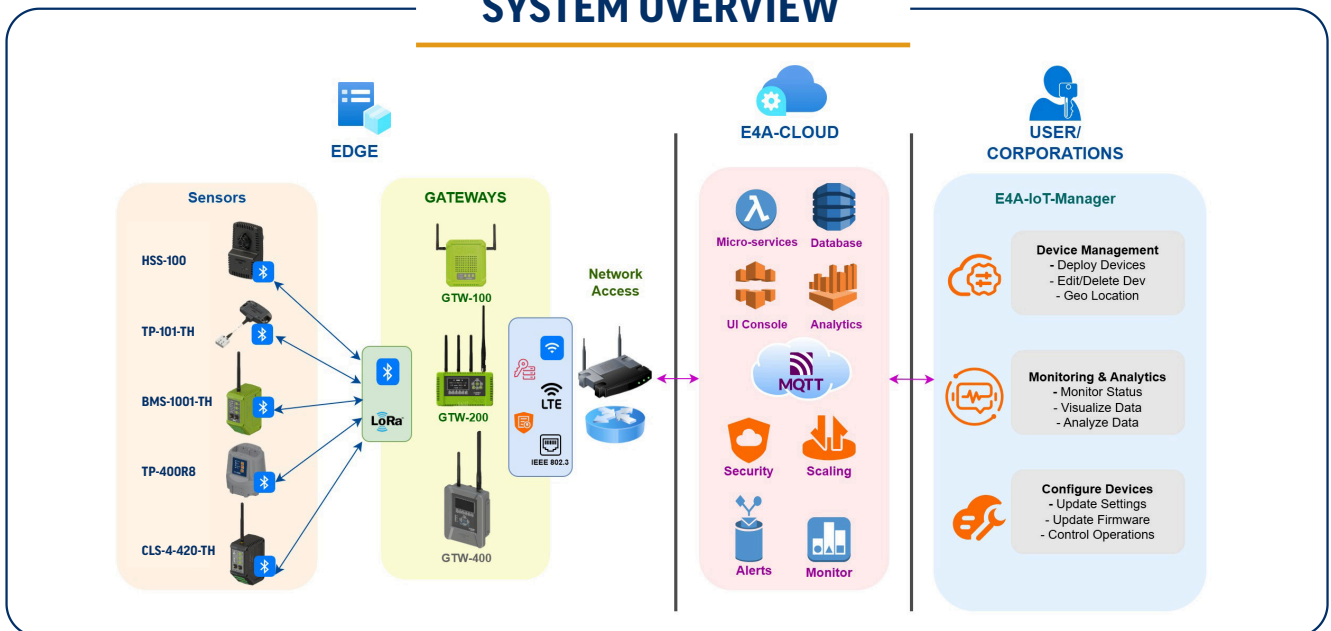
PRODUCT OVERVIEW

General Description

Engineered for reliability in the most demanding environments, E4A's 900MHz LoRa and Bluetooth® 5 dual-band gateway delivers unparalleled flexibility and performance. Combining the long-range, wall-penetrating power of LoRa with the energy-efficient, high-speed connectivity of Bluetooth® 5, this gateway ensures seamless communication across diverse conditions. Whether extending coverage deep into concrete structures or enabling efficient device connections in open spaces, it provides the right tool for every scenario—keeping your operations connected, resilient, and future-ready.



SYSTEM OVERVIEW



TECHNICAL SPECIFICATIONS

Power Supply

DC Input	7VDC to 15VDC
DC Input Jack	5.5mm OD, 2.5mm ID (+ive center pin)
Supply Current	65mA @ 12VDC
Power over Ethernet PoE	PoE, IEEE 802.3at, Mode A and B
USB	Limited to 5VDC and 0.5A

Operating Specifications

Operating Temperature	0°C to +75°C
Storage Temperature	-40°C to +85°C
Permissible Humidity	20-85% (operating and storage)
Protection Class	OVC 1
Pollution Degree	2
Ingress Protection	IP30

Measurement Characteristics

Temperature Measurement	-40°C to +120°C (±0.5°C accuracy)
Humidity Measurement	0-100% RH (±3.5% accuracy)
Acceleration Measurement	6-axis accelerometer ±16g FSR

Physical Characteristics

Housing Material	Flame Retardant Polycarbonate/ABS
Physical Dimensions	Height: 153mm / 5.9inch Width: 129mm / 5.1inch Depth: 40mm / 1.6inch
Weight	200g
Mounting	Wall mount (wall bracket) Desktop mount (rubber feet)

Edge Level Communication

Primary Sensor Communication

Transceiver	Bluetooth® 5 integrated transceiver
Frequency Band	2.4GHz
Communication Range	Up to 300m line of sight (Bluetooth® 5)
Data Rate	125kbps (Bluetooth® 5 long-range)
Protocol Type	Proprietary Bluetooth® 5 based
Output Power	Up to ±5dBm with temp. compensation
Receiver Sensitivity	-105dBm
Reporting Interval	User programmable

Range Extender / Repeater

Transceiver	Low power long-range LoRa
Frequency Band	915MHz
Communication Range	Up to 3km
Receiver Sensitivity	Down to -146dBm
TX Power	Up to +18dBm

Cloud Level Communication

Wired Network	Fast Ethernet (10/100)
Telemetry Protocol	MQTT v5.0 over TCP/IP

Security

Encryption	Advanced Encryption Standard (AES) Data Encryption Standard (DES) Secure Hash Algorithm / Message Digest Algorithm (SHA / MD5) Cyclical Redundancy Check (CRC)
------------	--

User Interface

Pushbuttons	3 pushbuttons for gateway function
Status LED	4 status LED's (red, green, amber)



PRODUCT CERTIFICATIONS

FCC ID	2AXVKGW01
Industry Canada	26661-GTW01
Safety Standards	UL Std. No. 61010-1 3rd Edition + Amd. 1:2018 CAN/CSA-C22.2 No. 61010-1-12 Third Edition + Amd. 1:2018

CONTACT US

Headquarters

250 Herzberg Road
Kanata, Ontario, Canada K2K 2A1

Lab Testing Facility

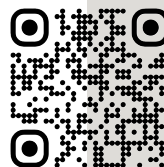
1292 Rosedale Road North
Smiths Falls, Ontario, Canada K7A 4S6

Phone: +1 (613) 595-0303

E-mail: sales@electronics4all.ca

Website: www.electronics4all.ca

SCAN HERE!



OUR PARTNERS

